

Agri-Products Inc.



STX



Mag 7000 & 8000 Series



MX w/Front Duals



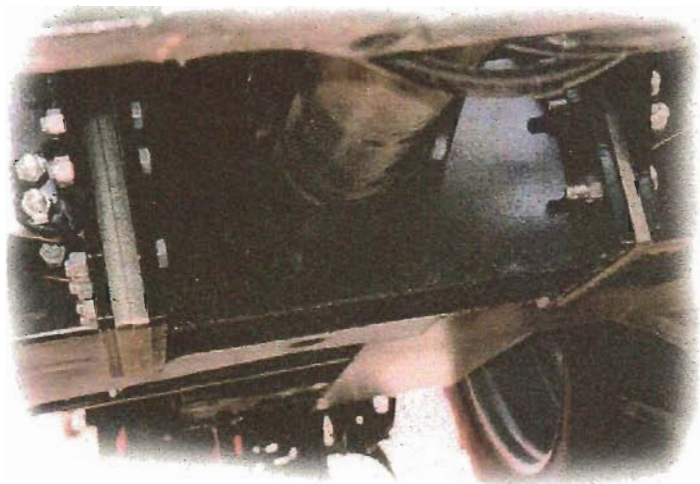
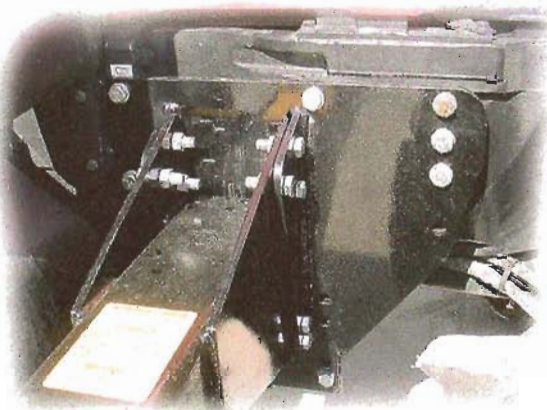
MX 240 - 270 Series



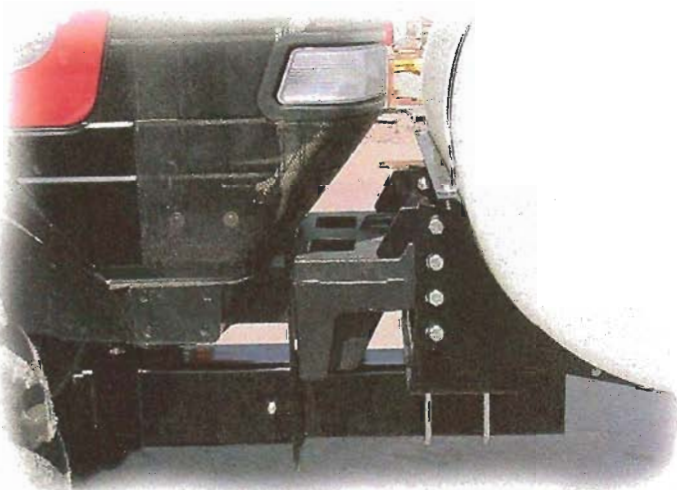
MX 210 - 230 255 - 285

- 300 & 400 GAL. TANKS AVAILABLE
- HIGH CLEARANCE DESIGN FOR GROWING CROP APPLICATION
- PARALLEL MOUNTING FOR GOOD VISIBILITY
- SIDE MOUNTS & FRONT MOUNTS MAY BE USED WHERE FRONT DUALS ARE USED
- EASE OF MOUNTING
- ALL FABRICATED STEEL COMPONENTS ARE PAINTED WITH A **POWDER COATED** PROCESS
- ELLIPTICAL TANKS AVAILABLE FOR CERTAIN FRONT MOUNTS

HEAVY STEEL PLATES ARE BOLTED TO THE SIDE OF THE TRACTOR AND TANK TUBES ARE BOLTED TO THESE PLATES



A HEAVY UNDER TRUSS BOLTS THE TWO SIDE PLATES TOGETHER FOR EQUAL WEIGHT DISTRIBUTION



MX SERIES REQUIRES A UNIQUE FRONT MOUNT WHICH ALLOWS THE BRACES TO ATTACH TO THE MAIN ENGINE BLOCK. A STURDY 7" X 7" TUBE SUPPORTS THE SADDLE AND A STEEL FORMED HOOK OVER THE WEIGHT BRACKET STABILIZES THE SADDLE. GROUND CLEARANCE IS 22 1/2"

York, NE 68467

Phone 402 362-5500 800 288-1117 FAX 402 362-5478

email: agriproducts@agriproductsinc.com

www.agriproductsinc.com