

Agri-Products Inc.



MT 700 - 800 Inside Outside Mounts



Challenger Series



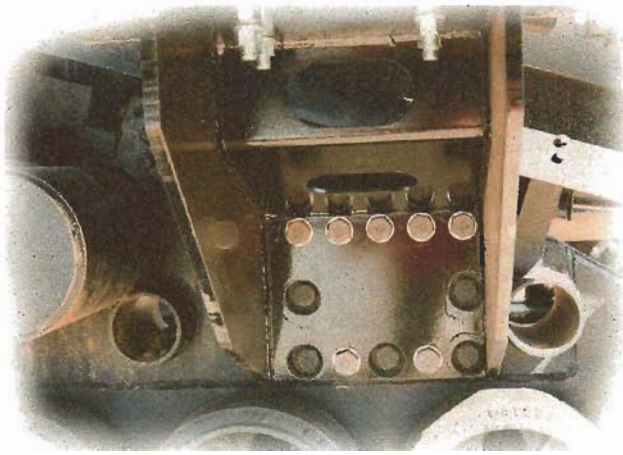
Custom Inside Poly Tanks



**Special Order Stainless Steel
Inside Mounts**



Outside Poly Tanks



Saddle brackets bolt directly to track mast. Attaches using existing bolt Pattern. Saddle bolts to top of bracket. Challenger 35, 45, 55 series. Outside Mounts 300 gal. only.

- **Challenger 35 - 45 - 55 Series**
Inside Tank Mounts
260 Gal. per side
MUST Have 16" or 18" Belts
set on 120" Centers
- **MT 700 - 800**
Front Mount 300 gal.
Inside Mount 210 gal.
Outside Mount 300 gal.
- **Custom Stainless Steel Tanks**
Up to 300 gals. per/side on the
inside of the Challenger 35 - 45 - 55,
(also 350 gals. per side on the
MT 700 models) are available.
- **Challenger Wheeled Tractors**
Front Mount 300 gal. Max
Side Mount 300 gal. per/side max
- **Note: Inside Mounts are not
available on the
MT 800 Series.**
- **All fabricated steel components
are painted with a *POWDER
COATED* process.**

Agri-Products has designed and developed these tank mounts in conjunction with **tractor manufacturer's recommendations.**

Design considerations include cab access, operator visibility, tractor frame design, tractor wheel/axle design and ease of mounting.

Heavy nylon straps are included to assure proper tank mounting.

York, NE 68467

Phone 402 362-5500 800 288-1117 FAX 402 362-5478

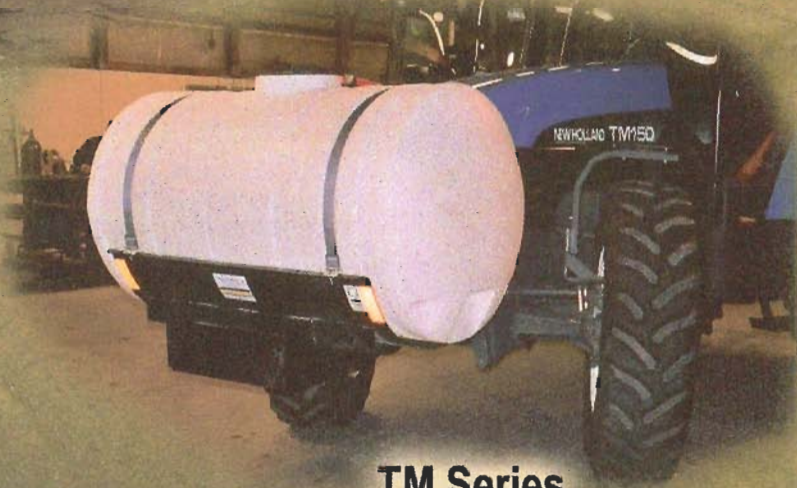
email: agriproducts@agriproductsinc.com

www.agriproductsinc.com

Agri-Products Inc.



Genesis Series



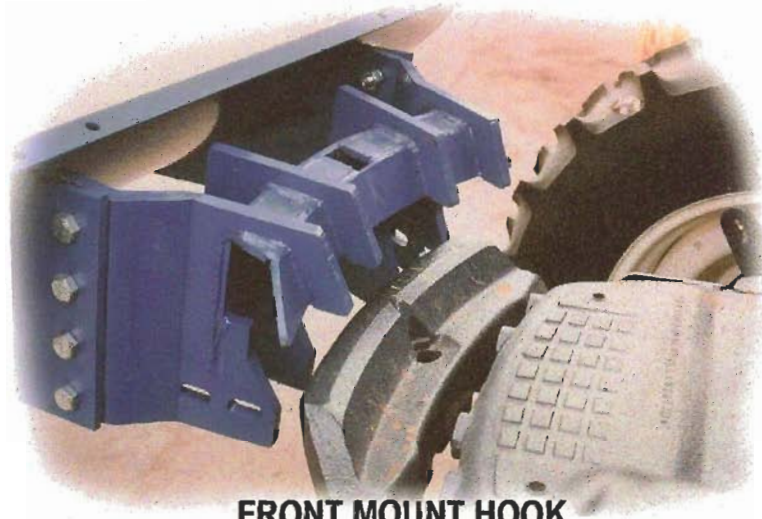
TM Series



4 Wheel Drive

Consider these major features:

- 200, 260, 300, 400 GALLON TANKS
- HI-CLEARANCE DESIGN FOR GROWING CROP APPLICATION
- PARALLEL TANK MOUNT FOR GREATER VISIBILITY
- HI-DENSITY TANKS ARE STANDARD. EACH HAS 1 1/4" & 3/4" OUTLET & RETURN. LIMITED THREE YEAR WARRANTY



FRONT MOUNT HOOK ASSEMBLY



TRACTOR MOUNTED SIDE PLATE WITH TUBE

York, NE 68467

Phone 402 362-5500 800 288-1117 FAX 402 362-5478

email: agriproducts@agriproductsinc.com

www.agriproductsinc.com

Agri-Products Inc.



STX



Mag 7000 & 8000 Series



MX w/Front Duals



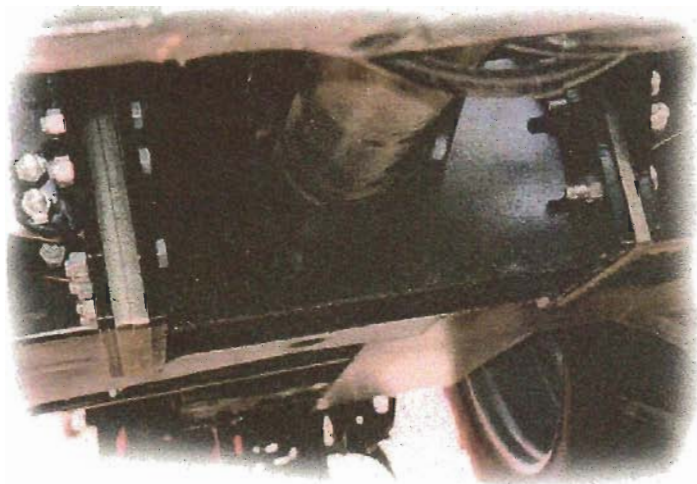
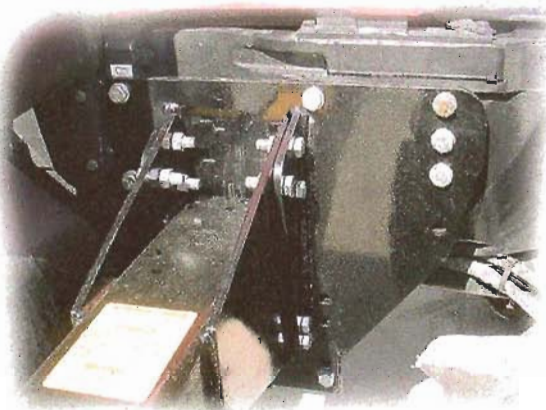
MX 240 - 270 Series



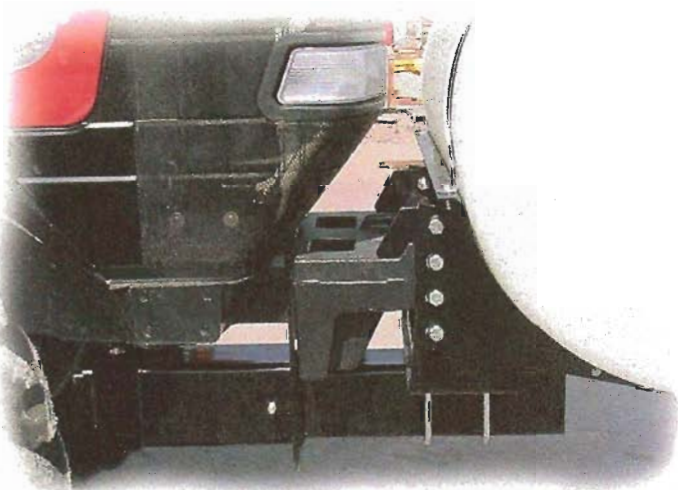
MX 210 - 230 255 - 285

- 300 & 400 GAL. TANKS AVAILABLE
- HIGH CLEARANCE DESIGN FOR GROWING CROP APPLICATION
- PARALLEL MOUNTING FOR GOOD VISIBILITY
- SIDE MOUNTS & FRONT MOUNTS MAY BE USED WHERE FRONT DUALS ARE USED
- EASE OF MOUNTING
- ALL FABRICATED STEEL COMPONENTS ARE PAINTED WITH A **POWDER COATED** PROCESS
- ELLIPTICAL TANKS AVAILABLE FOR CERTAIN FRONT MOUNTS

HEAVY STEEL PLATES ARE BOLTED TO THE SIDE OF THE TRACTOR AND TANK TUBES ARE BOLTED TO THESE PLATES



A HEAVY UNDER TRUSS BOLTS THE TWO SIDE PLATES TOGETHER FOR EQUAL WEIGHT DISTRIBUTION



MX SERIES REQUIRES A UNIQUE FRONT MOUNT WHICH ALLOWS THE BRACES TO ATTACH TO THE MAIN ENGINE BLOCK. A STURDY 7" X 7" TUBE SUPPORTS THE SADDLE AND A STEEL FORMED HOOK OVER THE WEIGHT BRACKET STABILIZES THE SADDLE. GROUND CLEARANCE IS 22 1/2"

York, NE 68467

Phone 402 362-5500 800 288-1117 FAX 402 362-5478

email: agriproducts@agriproductsinc.com

www.agriproductsinc.com

Agri-Products Inc.



JD 8000 Series w/front Duals



JD 4 Wheel Drive



JD Wide Trac Inside Poly Mounts



JD 30 - 60 Series



JD 7000 Series

Consider these major features:

- 200, 260, 300, 400 GALLON TANKS
- HI-CLEARANCE DESIGN FOR GROWING CROP APPLICATION
- PARALLEL TANK MOUNT FOR GREATER VISIBILITY
- FENDERS CANNOT BE USED ON 20 SERIES TRACTOR
- HI-DENSITY TANKS ARE STANDARD. EACH HAS 1 1/4" & 3/4" OUTLET & RETURN. LIMITED THREE YEAR WARRANTY



- Front mount assembly. Side braces will vary w/tractor models.



- JD 8000 Series tractor plates w/S.S. fender guard



- Outside Trac Mounts (300 gal. per side only)



- Hi - Clearance "Cross Mounts" for narrow clearance application

York, NE 68467

Phone 402 362-5500 800 288-1117 FAX 402 362-5478

email: agriproducts@agriproductsinc.com

JDMD

www.agriproductsinc.com



Agri-Products Inc.

John Deere 8000 Series 500 Gallon Hi-Clearance Side Mounts



AN EASY WAY TO ADD MORE CAPACITY & INCREASE FIELD TIME

- **Hi-quality components:**
 - All metal components are powder coated
 - Heavy 8" square saddle support tube, 1/2" thick wall
 - Centered mounting conversion for saddle
 - Adequate clearance under tank for plumbing and fittings
 - Excellent cab visibility

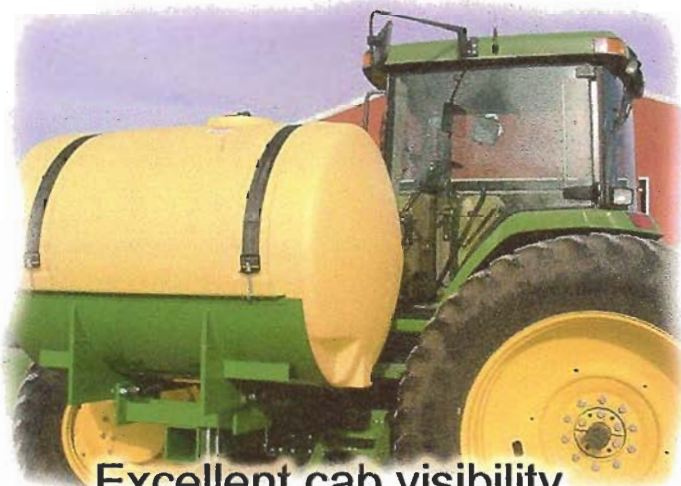
John Deere 500 Gallon Hi-Clearance Side Mounts

Important Dimensions:

- Front of tank to front of tractor 50"
- Height from top of tank to ground 90"
- Overall width 17ft.
- Bottom of saddle tube to ground 29"
- Outside of tank to tractor 82"
- Inside of tank to tractor 44"



Adequate room for access to cab
One step ladder and handle
Note: Tractor step needs to be rotated to rear and both hand rails must be removed.



Excellent cab visibility



View of saddle and mounting conversion on 8" square tube with 1/2" thick wall

York, NE 68467

Phone 402 362-5500 800 288-1117 FAX 402 362-5478

email: agriproducts@agriproductsinc.com

www.agriproductsinc.com

JD500



Agri-Products Inc.

JD8000T - 400



**400 gallons easily added to 8000 Trac models,
maintaining adequate ground clearance
& row visibility.**

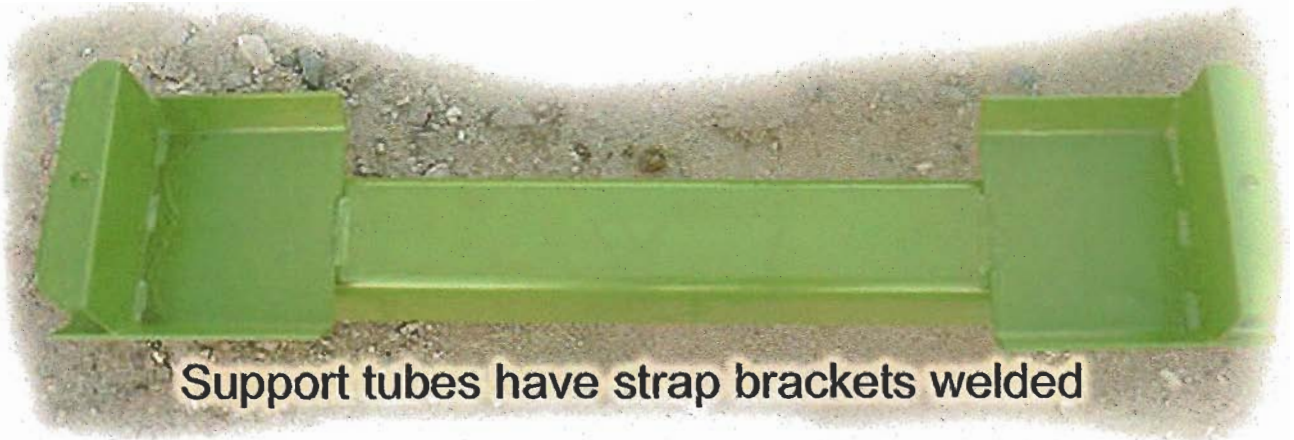


**Tanks are mounted above the axle
for maximum clearance. Tanks remain
inside the tracks.**

- Above axle mounting
- Mounts are painted with a *POWDER COATED* process
- Tanks remain inside tracs
- Heavy nylon straps secure tanks
- Hi-density tanks with sump and 1 1/4" & 3/4" outlet and return



Mounting includes brackets to extend stepladder out over trac



Support tubes have strap brackets welded

York, NE 68467

Phone 402 362-5500 800 288-1117 FAX 402 362-5478

email: agriproducts@agriproductsinc.com

www.agriproductsinc.com

JD8000T-400

