

Agri-Products Inc.



MT 700 - 800 Inside Outside Mounts



Challenger Series



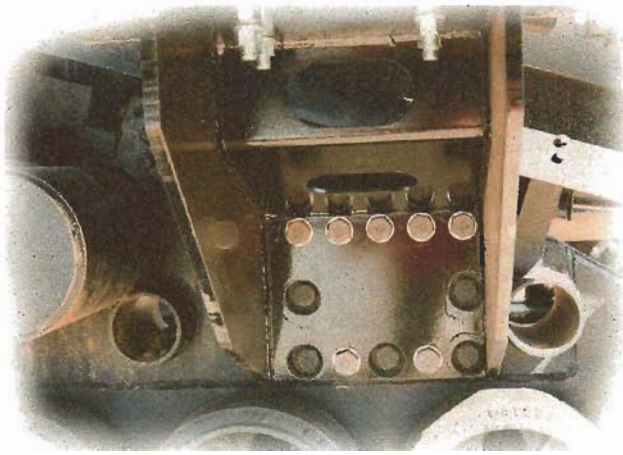
Custom Inside Poly Tanks



Special Order Stainless Steel Inside Mounts



Outside Poly Tanks



Saddle brackets bolt directly to track mast. Attaches using existing bolt Pattern. Saddle bolts to top of bracket. Challenger 35, 45, 55 series. Outside Mounts 300 gal. only.

- **Challenger 35 - 45 - 55 Series**
Inside Tank Mounts
260 Gal. per side
MUST Have 16" or 18" Belts
set on 120" Centers
- **MT 700 - 800**
Front Mount 300 gal.
Inside Mount 210 gal.
Outside Mount 300 gal.
- **Custom Stainless Steel Tanks**
Up to 300 gals. per/side on the
inside of the Challenger 35 - 45 - 55,
(also 350 gals. per side on the
MT 700 models) are available.
- **Challenger Wheeled Tractors**
Front Mount 300 gal. Max
Side Mount 300 gal. per/side max
- **Note: Inside Mounts are not
available on the
MT 800 Series.**
- **All fabricated steel components
are painted with a *POWDER
COATED* process.**

Agri-Products has designed and developed these tank mounts in conjunction with **tractor manufacturer's recommendations.**

Design considerations include cab access, operator visibility, tractor frame design, tractor wheel/axle design and ease of mounting.

Heavy nylon straps are included to assure proper tank mounting.

York, NE 68467

Phone 402 362-5500 800 288-1117 FAX 402 362-5478

email: agriproducts@agriproductsinc.com

www.agriproductsinc.com

CatMB

