

2021 PRICING

**2021
VERSION**

REDUCED ELBOW
& 2 PC CLAMP
BAND PRICING

NEW PRODUCTS
- AUGER LOAD-OUTS
- AR200 ELBOWS
- SLEEVED RETARDERS

Agri-Products Inc.

www.agriproductsinc.com

**MATERIAL HANDLING
ACCESSORIES CATALOG**

We design and build
to your specifications.

DESIGN | INNOVATE | PERFORM

800-288-1117

Dear Customer,

Since 1985, Agri-Products, Inc. has developed and improved our designs and accessories required for handling grain, seed, fertilizer, aggregate, and food products. All of these products have different requirements in design and material.

The process for creating exceptional bulk handling equipment can be manufactured using mild steel, stainless steel, aluminum, and galvanized steel. Sawing is executed with a CNC controlled saw and provides accuracy on every cut. Sheet and plate fabrication is accomplished using a Hypertherm CNC Plasma cutting table and shear. When shearing and plasma operations are completed, bending and shaping are mastered by using a CNC press brake that assures accuracy for correct assembly. Our press brake is also capable of forming a $\frac{3}{4}$ " thick plate.

Coating the finished products can be done in standard industrial paint or powder coating, as well as, "Hot Dip" galvanizing. We acquired a new paint booth with controlled air movement, and the use of electrostatic paint assures proper paint coverage for your product. *(Various colors are available on request.)*

Our greatest asset is the skill of our designers and production team. Years of working together have developed our abilities beyond the standard. Our staff brings years of knowledge in agriculture, food processing, and grain handling. Offering extensive experience combined with our substantial record of success assures you a quality product at a competitive price.

THANK YOU FOR
CONSIDERING AGRI-PRODUCTS,
INC. AS A SOURCE FOR YOUR
MATERIAL HANDLING.

This catalog is a preview of our basic products available. We can design and create elevators, belt conveyors, drag conveyors, special spouting, almost anything needed to convey and elevate free-flowing material.

Give us a call at **800-288-1117**

We look forward to being a reliable source for all your agri needs.

Don Freeman, II
President of Agri-Products, Inc.

Don Freeman, III
Vice President of Agri-Products, Inc.

Agri-Products Inc.

WARRANTY STATEMENT

Agri-Products, Inc.'s goal is to supply all our customers with the best product possible.

Our warranty promises to repair or replace, at Agri-Products, Inc. discretion, any product that is defective in material or workmanship for a period of one year from the date of purchase. The original purchaser must also maintain ownership of the product.

Omission to this warranty is as follows but not limited to:

- Normal wear and tear
- Product negligence – Agri-Products, Inc. is not responsible for improper installation or misuse of the product.
- Any alterations to the product that were not approved by Agri-Products, Inc.
- Components not manufactured by Agri-Products, Inc. will carry only the warranty that is stated by its' manufacturer. Agri-Products, Inc. will have no responsibility with regard to warranty claims beyond that of the manufacturer's warranty statement.

Warranty Procedures

- If a defect in the product has been discovered, the original purchaser must contact Agri-Products, Inc.
- If necessary, a picture will be sent to Agri-Products, Inc. to inspect the defective product.
- Prior to any warranty work or replacement of part(s), approval from Agri-Products, Inc. is determined. Only Agri-Products, Inc. can approve a warranty claim.
- The warranty will cover material and labor for the claim and is FOB York, Nebraska. Any transportation charges will be assumed by the dealer or user.

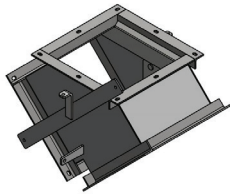
Conditions: All prices FOB York or factory unless quoted otherwise.

Prices are subject to change without notice.
Any quotations given, written or oral, are good for 15 days.

PRODUCT INDEX

- A -		- O -	
Adjustable Dead Ends	8	Overflow Boxes	4
Angle Ring Flanges	6		
Abrasive Resistant	10	- P -	
		Pinions	7
- B -		Product Dimensions	20
Bearings	19	Pulleys	19
Belting, Elevator	17		
		- R -	
- C -		Rack & Pinion Gates	7
Cable & Accessories	10	Racks	7
Cable Clamps	10	Retarders	8
Cable Thimbles	10	Round Dead End Stops	8
Ceramic Tile	10		
Chain Wheel	7	- S -	
Clamp Bands	6	Shafts, Head & Boot	19
Cup Bolts	17	Spout Capacity Chart	21
Cups, Elevator	17	Spout Sleeves	7
		Spouting	7
- D -		Square Flanges	7
Distributors	16	Square Hinged Flanges	7
Drag Components	18	Square Spouting	9
- E -		- T -	
Elbows, Round	6	Three Way Pan Valves	4
Elbows, Square	8	Transitions	5
		Truss Kits, Grain Pump	14-15
- F -		Truss Kits, Round	11-12
Flat Top Adaptors	5	Truss Kits, Square	13
Flop Gates	4	Turnbuckles	10
		Two Way Offset Valves	4
- H -		Two Way Pan Valves	4
Hand Slide Gates	5		
Hand Wheels	7	- U -	
Hot House Pulley	10	UHMW Spout Lining	10
		Urethane	10
- L -		U-Trough Liners	8
Lagging, Pulley	18		

TWO WAY PAN VALVES - Y STYLE



6" - 12" 3/4" Pins
 14" - 18" 1" Pins
 Above 18" 1 1/4" Pins
 2 bolt FLG BRGS on 18" & Larger

Two way square valves with square inlet and outlets, flanged, 7 gauge pan, 11 gauge body, 6"-10" have 3/16" x 1 1/4" square flanges and 12" - 16" have 3/16" x 1 1/2" square flanges.

Size	Wt.	Price	Galvanized	Wt.
6"	(25)	\$ 288.00	\$ 313.00	(28)
8"	(36)	319.00	350.00	(38)
10"	(44)	381.00	425.00	(46)
12"	(67)	500.00	544.00	(69)
14"	(97)	581.00	625.00	(100)
16"	(128)	756.00	844.00	(131)

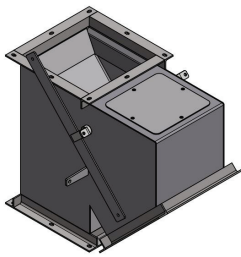
LARGER SIZES QUOTED ON REQUEST. For 60° 2 Way Valve add 40%.

AVAILABLE IN 304 STAINLESS STEEL, CALL FOR PRICING.

For electric 2 way or 45° diversion valve ADD: \$1,225.00. This includes 1/2 HP 1750 RPM 240V/480V 3-Phase Motor, 60:1 reducer, an additional 5:1 reducer, flexible couplings, (2) limit switches.

For ANDCO Actuator, 4" /second movement, 240V480V 3-Phase: CALL FOR PRICING.

TWO WAY OFFSET VAVLES - K STYLE



Same specifications as two way pan valves.

Size	Wt.	Price	Galvanized	Wt.
6"	(43)	\$ 338.00	\$ 363.00	(45)
8"	(52)	363.00	438.00	(54)
10"	(70)	438.00	469.00	(73)
12"	(120)	563.00	625.00	(124)
14"	(155)	700.00	769.00	(161)
16"	(184)	818.00	894.00	(190)

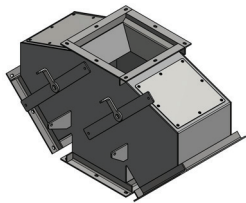
LARGER SIZES QUOTED ON REQUEST. For 60° Diversion Valve add 40%.

AVAILABLE IN 304 STAINLESS STEEL, CALL FOR PRICING.

For electric 2 way or 45° diversion valve ADD: \$1,225.00. This includes 1/2 HP 1750RPM 240V/480V 3-Phase Motor, 60:1 reducer, an additional 5:1 reducer, flexible couplings, (2) limit switches.

For ANDCO Actuator, 4" /second movement, 240V480V 3-Phase: CALL FOR PRICING.

THREE WAY PAN VAVLES



Same specifications as two way pan valves - Damper Type Diverters.

Size	Wt.	Price	Galvanized	Wt.
6"	(54)	\$ 563.00	\$ 606.00	(58)
8"	(52)	631.00	681.00	(54)
10"	(70)	763.00	819.00	(73)
12"	(120)	875.00	944.00	(124)
14"	(155)	1025.00	1113.00	(161)
16"	(184)	1294.00	1406.00	(190)

LARGER SIZES QUOTED ON REQUEST. For 60° Diversion Valve add 40%.

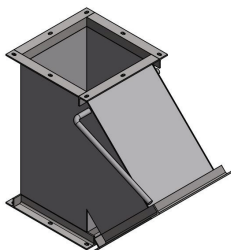
AVAILABLE IN 304 STAINLESS STEEL, CALL FOR PRICING.

For electric 3 way valve ADD: \$2,450.00. This includes (2) 1/2 HP 750RPM 240V/480V 3-Phase Motor, (2) 60:1 reducer, (2) additional 5:1 reducer, flexible couplings, (4) limit switches.

For ANDCO Actuator, 4" /second movement, 240V480V 3-Phase CALL FOR PRICING.

For air controlled 3-way, call for pricing.

OVERFLOW BOXES

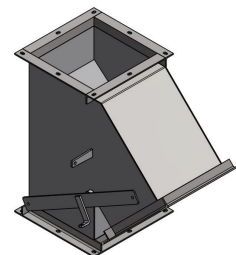


11 ga. body, 10 ga. gate

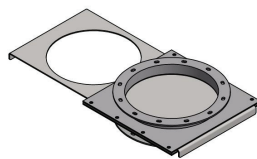
Size	Wt.	Price	Galvanized
6"	(30)	\$ 288.00	\$ 331.00
8"	(38)	338.00	381.00
10"	(49)	406.00	456.00
12"	(63)	456.00	513.00
14"	(82)	513.00	575.00

AVAILABLE IN 304 STAINLESS STEEL, CALL FOR PRICING.

FLOP GATE



HAND SLIDE GATES



Size	Wt.	Price	Galvanized
6".....(15)		\$ 194.00	\$ 206.00
8".....(20)		200.00	219.00
10".....(25)		219.00	244.00
12".....(32)		263.00	294.00
14".....(38)		319.00	319.00

STAINLESS STEEL - CALL FOR PRICING

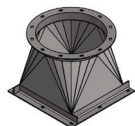
FLAT TOP ADAPTERS



AVAILABLE IN 304 STAINLESS STEEL, CALL FOR PRICING.

Size	Wt.	Price	Galvanized
6".....(4)		\$ 59.00	\$ 63.00
8".....(5)		59.00	63.00
10".....(7)		66.00	71.00
12".....(10)		75.00	80.00
14".....(14)		89.00	98.00
16".....(16)		133.00	143.00
18".....(20)		143.00	151.00

SQUARE TO ROUND TRANSITIONS



Heavy duty transitions with 11 gauge or 7 gauge body. 6" - 10" have $\frac{3}{16}$ " x $1\frac{1}{4}$ " square flanges and $\frac{1}{8}$ " x $1\frac{1}{4}$ " angle ring flanges. 12" - 16" have $\frac{3}{16}$ " x $1\frac{1}{2}$ " square flanges and $\frac{3}{16}$ " x $1\frac{1}{2}$ " angle ring flanges. Call for price quotes on custom sizes.

Square angle iron flange on top. Round angle ring flange on bottom.

AVAILABLE IN 304 STAINLESS STEEL, CALL FOR PRICING.

	Size	Ga.	Wt.	Price	Galvanized	Price $\frac{1}{4}$ " Lined Urethane Painted
8" OA HEIGHT	8" Sq. to 6" Rd.	11	(10)	\$75.00	\$83.00	\$ 221.00
	8" Sq. to 6" Rd.	7	(12)	107.00	119.00	213.00
	8" Sq. to 8" Rd.	11	(11)	75.00	83.00	181.00
	8" Sq. to 8" Rd.	7	(14)	107.00	119.00	200.00
10" OA HEIGHT	10" Sq. to 6" Rd.	11	(12)	101.00	115.00	221.00
	10" Sq. to 8" Rd.	11	(13)	101.00	115.00	221.00
	10" Sq. to 8" Rd.	7	(16)	119.00	133.00	235.00
	10" Sq. to 10" Rd.	11	(15)	80.00	93.00	226.00
	10" Sq. to 10" Rd.	7	(18)	115.00	128.00	235.00
	12" Sq. to 8" Rd.	11	(24)	123.00	143.00	235.00
	12" Sq. to 8" Rd.	7	(31)	150.00	171.00	256.00
	12" Sq. to 10" Rd.	11	(26)	119.00	133.00	235.00
	12" Sq. to 10" Rd.	7	(33)	156.00	181.00	256.00
	12" Sq. to 12" Rd.	11	(29)	111.00	133.00	240.00
	12" Sq. to 12" Rd.	7	(35)	144.00	169.00	240.00
	14" Sq. to 10" Rd.	11	(32)	175.00	203.00	256.00
	14" Sq. to 10" Rd.	7	(36)	203.00	231.00	313.00
	14" Sq. to 12" Rd.	11	(33)	175.00	208.00	275.00
	14" Sq. to 12" Rd.	7	(39)	203.00	244.00	319.00
	14" Sq. to 14" Rd.	11	(41)	128.00	160.00	269.00
	14" Sq. to 14" Rd.	7	(49)	160.00	203.00	319.00
	16" Sq. to 16" Rd.	11	(60)	175.00	213.00	374.00
	16" Sq. to 16" Rd.	7	(60)	213.00	240.00	400.00
	18" Sq. to 18" Rd.	11	(70)	203.00	248.00	438.00
	18" Sq. to 18" Rd.	7	(70)	240.00	256.00	475.00
	20" Sq. to 20" Rd.	11	(80)	248.00	319.00	481.00
	20" Sq. to 20" Rd.	7	(80)	256.00	338.00	500.00

CUSTOM SIZES
AVAILABLE
UPON
REQUEST

ROUND TO ROUND TRANSITIONS

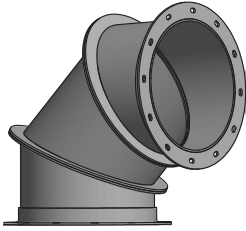
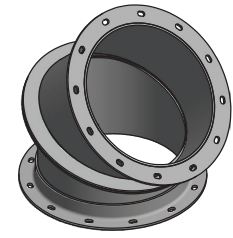


Heavy duty transitions with 11 gauge body. 6" - 10" have $\frac{1}{8}$ " x $1\frac{1}{4}$ " angle ring flanges. 12" - 16" have $\frac{3}{16}$ " x $1\frac{1}{2}$ " angle ring flanges. Call for quote on custom sizes.

AVAILABLE IN 304 STAINLESS STEEL, CALL FOR PRICING.

	Size	Ga.	Wt.	Price	Galvanized	Price $\frac{1}{4}$ " Lined Urethane Painted
8" OA HEIGHT	6" Rd. to 4" Rd.	11	(8)	\$ 101.00	\$ 111.00	\$ 221.00
	8" Rd. to 6" Rd.	11	(10)	101.00	111.00	221.00
	10" Rd. to 8" Rd.	11	(14)	111.00	123.00	240.00
	10" Rd. to 8" Rd.	7	(16)	133.00	144.00	269.00
12" OA HEIGHT	12" Rd. to 10" Rd.	11	(20)	138.00	156.00	313.00
	12" Rd. to 10" Rd.	7	(26)	156.00	173.00	331.00
	14" Rd. to 12" Rd.	11	(25)	160.00	181.00	338.00
	14" Rd. to 12" Rd.	7	(32)	175.00	208.00	363.00
	16" Rd. to 14" Rd.	7	(45)	235.00	269.00	394.00
	18" Rd. to 16" Rd.	7	(45)	244.00	319.00	400.00

ADJUSTABLE ELBOWS



Size	Gauge	2pc. 45°	3pc 67.5°	1/4" Urethane Liner Adder	
6" PAINTED	10	\$115.00	\$165.00	2PC: \$113.00	3PC: \$169.00
6" GALV	10	125.00	175.00	2PC: \$113.00	3PC: \$169.00
8" PAINTED	7	90.00	140.00	2PC: \$113.00	3PC: \$169.00
8" GALV	7	100.00	150.00	2PC: \$113.00	3PC: \$169.00
8" AR 200 PAINTED ..	7	254.00	385.00		
8" AR 200 GALV	7	264.00	408.00		
10" PAINTED	7	105.00	165.00	2PC: \$150.00	3PC: \$225.00
10" GALV	7	120.00	175.00	2PC: \$150.00	3PC: \$225.00
10" AR 200 PAINTED ..	7	258.00	391.00		
10" AR 200 GALV	7	273.00	420.00		
12" PAINTED	7	138.00	220.00	2PC: \$175.00	3PC: \$263.00
12" GALV	7	154.00	228.00	2PC: \$175.00	3PC: \$263.00
12" AR 200 PAINTED ..	7	311.00	473.00		
12" AR 200 GALV	7	334.00	513.00		
14" PAINTED	7	173.00	286.00	2PC: \$200.00	3PC: \$300.00
14" GALV	7	200.00	311.00	2PC: \$200.00	3PC: \$300.00
14" AR 200 PAINTED ..	7	340.00	520.00		
14" AR 200 GALV	7	370.00	565.00		

STD ELBOWS WELDED WITH (2) FLAT RINGS *WEDGE STYLE*

AR 200 ELBOWS ARE ROLLED THEN WELDED WITH (1) FLAT RING & (1) ARF

2PC ELBOWS INCLUDE (1) 2PC CLAMP

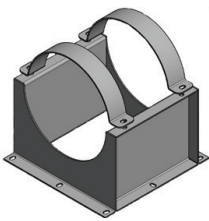
3PC ELBOWS INCLUDE (2) 2PC CLAMP

6" ELBOWS ARE WELDED WITH (1) FLAT RING & (1) ARF

CALL FOR PRICING ON LARGER SIZES

ANGLE RING FLANGES PUNCHED

AUGER LOAD-OUTS



Size	Painted	Galvanized
6"	\$ 100.00	\$ 110.00
8"	125.00	138.00
10"	150.00	165.00
12"	175.00	194.00
14"	200.00	223.00

	Size	Wt.	Price
1/8" x 1-1/4" Angle [4"	(1.0)	6.75
	6"	(1.5)	9.50
3/16" x 1-1/4" Angle [8"	(2.0)	10.00
	10"	(3.0)	11.00
	12"	(4.0)	14.50
3/16" x 1-1/2" Angle [14"	(5.0)	16.25
	16"	(8.0)	22.00
	18"	(9.0)	30.75
3/16" x 1-3/4" Angle [20"	(10.0)	33.50
	22"	(11.0)	35.00
	24"	(12.0)	36.25

ADD \$40.00 per flange for welding to pipe

CLAMP BANDS



Two piece galvanized.

Size	Galvanized	Size	Galvanized
6"	\$7.50	14"	\$ 21.25
8"	8.25	16"	28.75
10"	10.00	18"	43.75
12"	13.25	20"	47.50

SQUARE ANGLE IRON FLANGES

6"-10", 3/16" x 1 1/4" x 1 1/4"; Sizes 12" and larger, 3/16" x 1 1/2" x 1 1/2"

Size	Wt.	Price
6"	(4.0)	\$ 24.00
8"	(5.0)	26.00
10"	(6.0)	28.00
12"	(8.0)	31.00
14"	(10.0)	40.00
16"	(11.0)	43.00
18"	(12.0)	44.00
20"	(13.0)	46.00
22"	(14.0)	59.00
24"	(15.0)	65.00

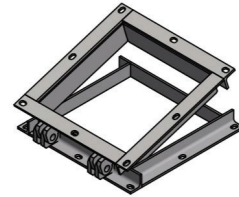
1/4" FLAT
FLANGES
SAME PRICE



SQUARE HINGED FLANGE FOR LOADOUT SPOUT

3/4" PIN

Size	Wt.	Price
8"	15	\$ 163.00
10"	17	181.00
12"	20	206.00
14"	24	231.00
16"	28	250.00
18"	30	275.00

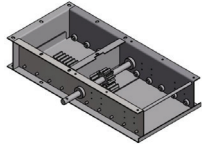


AVAILABLE IN 304 STAINLESS STEEL, CALL FOR PRICING.

RACK AND PINION GATES

11ga body, 7ga gate, 1" pinion shaft, cast iron rack & pinion. All gates 6" O.A. height.

GATES MOUNTED ON 1-1/8" STEEL BEARINGS ON 3" CENTERS



Prices DO NOT include
control wheels
*includes double rack
& pinions

For electric control
ADD \$1,210.00. This
includes 1/2 HP TEFC-
BB Motor, 60:1 reducer,
flexible coupling and
2 limit switches. Gate
speed is 17ft./min.

Size	Wt.	Ceiling Mount	Wt.	45° Wall Mount Adapter	Wt.	Cover
8"	(40)	\$ 338.00	(40)	\$ 256.00	(18)	\$ 75.00
10"	(48)	363.00	(48)	275.00	(4.0)	75.00
12"	(55)	400.00	(55)	313.00	(5.0)	88.00
14"	(64)	438.00	(64)	325.00	(6.0)	88.00
*16"	(73)	488.00	(73)	363.00	(7.0)	88.00
*18"	(85)	575.00	(85)	394.00	(9.0)	113.00
*20"	(94)	606.00	(94)	425.00	(11.0)	113.00
*22"	(110)	663.00	(110)	538.00	(13.0)	125.00
*24"	(125)	750.00	(125)	556.00	(18.0)	125.00

AVAILABLE IN 304 STAINLESS STEEL,
CALL FOR PRICING.

For explosion proof motor and limit switches
ADD additional \$1,010.00

ACCESSORIES:

16" Rack	\$27.00	Chain Wheel	\$83.75
22" Rack	\$28.75	Chain/foot	\$3.25
Pinion x 1"	\$25.75	12" Hand/Cable Wheel	\$50.00
12" CI Hand Wheel	\$72.50		
Steel Roller Bearings	\$1.50	ALL GATES ARE ROLLER GATES	

For air controlled gate, call for pricing. This includes cylinder in lieu of
rack & pinion. No controls, no switches.

SPOUT SPLICE SLEEVE 11 ga

Rolled 24" Long

Size	Wt.	Price	Galvanized
6"	(17)	\$ 50.00	\$ 68.00
8"	(23)	55.00	75.00
10"	(30)	63.00	90.00
12"	(34)	69.00	98.00
14"	(42)	103.00	131.00
16"	(48)	125.00	156.00

*Requires field welding of seam

REMOTE CONTROL ELECTRIC R&P GATE

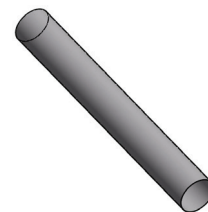
ADD **\$4,163.00** to manual gate price.

Available in single phase 110V or 220V & 3-phase 240V or 480V.

Unit comes with (2) remotes, electrical control box & antenna.

ROUND SPOUTING

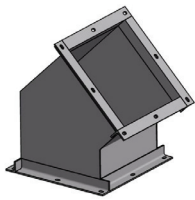
Size	Ga.	Wt.	Price/FT.	Galvanized	Painted **
6"	12	(6.75)			\$ 3.25
6"	10	(8.87)			3.25
8"	12	(9.05)			3.25
8"	10	(11.85)			3.25
8"	7	(15.70)			3.25
10"	12	(12.65)			4.00
10"	10	(14.25)	Call for pricing	Call for pricing	4.00
10"	7	(20.00)			4.00
12"	10	(17.50)			5.00
12"	7	(24.30)			5.00
14"	10	(20.70)			5.50
14"	7	(28.00)			5.50
16"	7	(31.40)			6.25



*Pricing is for 40 ft. lengths

** Per foot 1 coat prime

SQUARE 45° ELBOWS



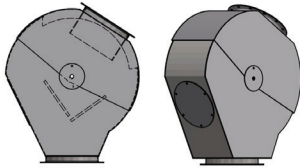
11ga body with angle flanges. ADD 20% for 7ga

Size	Wt.	Price	1/4" Urethane Lined	Galvanized
6".....	(10)	\$ 138.00	\$ 313.00	\$ 150.00
8".....	(12)	181.00	363.00	188.00
10".....	(14)	200.00	400.00	213.00
12".....	(18)	206.00	438.00	219.00
14".....	(22)	238.00	475.00	256.00
16".....	(18)	250.00	500.00	269.00
18".....	(22)	263.00	575.00	281.00

AVAILABLE IN 304 STAINLESS STEEL, CALL FOR PRICING.

ADJUSTABLE DEAD END

Our adjustable dead end has a round inlet with a choice of square or round outlet. 1/2" plates are used for its interior baffles. The top adjustable section has an 11ga body. **The bottom section is fabricated using 7ga AR** with an inspection door.

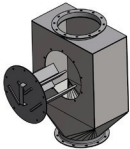


Size	Wt.	Price	Galvanized
6".....	(23)	\$ 438.00	\$ 494.00
8".....	(38)	488.00	544.00
10".....	(47)	556.00	619.00
12".....	(65)	713.00	788.00
14".....	(79)	844.00	931.00
16".....	(91)	1344.00	1063.00

AVAILABLE IN 304 STAINLESS STEEL, CALL FOR PRICING.

VERTICAL GRAIN RETARDERS

Our retarder are round in/out with removable 1/2" baffles. **Retarder bodies are fabricated using 7ga AR.**



Size	Wt.	Price	Galvanized
6".....	(52)	\$ 400.00	\$ 431.00
8".....	(58)	413.00	444.00
10".....	(69)	469.00	500.00
12".....	(84)	594.00	644.00
14".....	(99)	938.00	981.00
16".....	(132)	1044.00	1106.00

AVAILABLE IN 304 STAINLESS STEEL, CALL FOR PRICING.

SLEEVED GRAIN RETARDERS

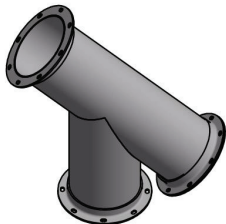


Size	Wt.	Price	Galvanized
8".....	(165)	\$ 750.00	\$ 844.00
10".....	(210)	863.00	979.00
12".....	(333)	975.00	1156.00
14".....	(470)	1363.00	1619.00
16".....	(605)	1463.00	1794.00

SLEEVED RETARDERS ARE RECOMMENDED FOR SPOUT LENGTHS LONGER THAN 40FT

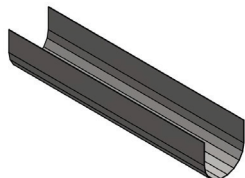
ROUND DEAD END STOPS 45°

With removable end, 7ga



Size	Wt.	Price	Galvanized
6".....	(23)	\$ 206.00	\$ 225.00
8".....	(38)	210.00	231.00
10".....	(47)	223.00	250.00
12".....	(65)	273.00	306.00
14".....	(79)	375.00	419.00
16".....	(91)	500.00	556.00

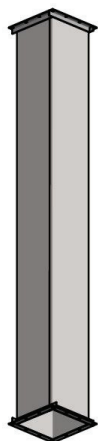
SCREW CONVEYOR U-TROUGH LINERS



10ga mild steel 5' lengths. Covers curved bottom plus 1" vertical.

Size	Wt.	Price
10" for 9" Screw.....	(42)	\$ 106.00
13" for 12" Screw.....	(52)	125.00
15" for 14" Screw.....	(56)	131.00
17" for 16" Screw.....	(64)	150.00

SQUARE SPOUTING - WELDED SEAM



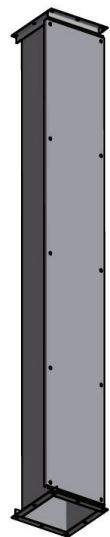
AVAILABLE IN
304 STAINLESS
STEEL, CALL FOR
PRICING.

- Flanges up through 10", $\frac{3}{16}$ " x $1\frac{1}{4}$ " x $1\frac{1}{4}$ "; Flanges 12 and up, $\frac{3}{16}$ " x $1\frac{1}{2}$ " x $1\frac{1}{2}$ "
- For 10ga add 10%
- For 7ga add 30%

Size	Ga.	Description	Wt.	Price	Galvanized 12GA
8"	12	unflanged	(117)	\$ 288.00	\$ 344.00
8"	12	flanged	(127)	388.00	444.00
10"	12	unflanged	(146)	331.00	394.00
10"	12	flanged	(158)	481.00	556.00
12"	12	unflanged	(175)	369.00	450.00
12"	12	flanged	(191)	519.00	619.00
14"	12	unflanged	(205)	419.00	519.00
14"	12	flanged	(224)	588.00	688.00
16"	12	unflanged	(234)	500.00	831.00
16"	12	flanged	(255)	688.00	806.00
18"	12	unflanged	(263)	581.00	700.00
18"	12	flanged	(287)	788.00	913.00
20"	12	unflanged	(340)	650.00	794.00
20"	12	flanged	(370)	850.00	1013.00
24"	12	unflanged	(360)	975.00	1138.00
24"	12	flanged	(390)	1231.00	1400.00

Call us for quotes on sizes not shown. Consult page 21 for Capacity Information.

SQUARE SPOUTING - REMOVABLE LID



AVAILABLE IN
304 STAINLESS
STEEL, CALL FOR
PRICING.

- Lining includes bottom and $\frac{2}{3}$ of each side
- For 10ga add 10%

Size	Ga.	Description	Wt.	Price	Galvanized
8"	12	flanged only	(127)	\$ 531.00	\$ 588.00
8"	12	flanged & LD $\frac{1}{4}$ " Urethane	(215)	1063.00	1119.00
10"	12	flanged only	(158)	619.00	694.00
10"	12	flanged & LD $\frac{1}{4}$ " Urethane	(269)	1138.00	1206.00
12"	12	flanged only	(191)	638.00	719.00
12"	12	flanged & LD $\frac{1}{4}$ " Urethane	(302)	1250.00	1325.00
14"	12	flanged only	(224)	738.00	831.00
14"	12	flanged & LD $\frac{1}{4}$ " Urethane	(354)	1400.00	1500.00
16"	12	flanged only	(255)	844.00	950.00
16"	12	flanged & LD $\frac{1}{4}$ " Urethane	(403)	1575.00	1688.00
18"	12	flanged only	(287)	956.00	1088.00
18"	12	flanged & LD $\frac{1}{4}$ " Urethane	(487)	1731.00	1863.00
20"	12	flanged only	(325)	1019.00	1163.00
20"	12	flanged & LD $\frac{1}{4}$ " Urethane	(400)	1844.00	1988.00
24"	12	flanged only	(400)	1450.00	1631.00
24"	12	flanged & LD $\frac{1}{4}$ " Urethane	(500)	2206.00	2388.00
30"	12	flanged only	(480)	1938.00	2169.00
30"	12	flanged & LD $\frac{1}{4}$ " Urethane	(630)	3094.00	3331.00

Call us for quotes on lining not shown. Consult page 21 for Capacity Information.

CABLE & ACCESSORIES

Description	Price
1/8" aircraft cable	\$.28/ft
3/16" aircraft cable33/ft
3/8" aircraft cable80/ft
1/2" aircraft cable	1.50/ft
1/8" cable clamp28
3/16" cable clamp33
3/8" cable clamp80
1/2" cable clamp95
3/8" thimbles83
1/2" thimbles	1.51
1/2" x 1-1/2" eye bolt	3.45
3/4" x 2" eye bolt	7.30
1/2" x 6" turnbuckle H/E	10.25
5/8" x 6" turnbuckle H/E	12.90
3/4" x 9" turnbuckle H/E	14.40
1-1/4" x 12" turnbuckle C/E	91.90
2-1/2" hot house pulley with cast pulley	17.85
2-1/2" side pulley with cast pulley	17.85
Cast iron cable handle	17.85

UHMW

Description	Price
1/8" UHMW lining per sq. ft.	\$ 7.00
1/8" UHMW lining 4' x 10' sheet	256.00
1/4" UHMW lining per sq. ft.	10.50
1/4" UHMW 4' x 10' sheet	383.00

URETHANE

Description	Price
1/4" URETHANE with expanded metal back per sq. ft.	\$ 18.00
1/4" URETHANE with expanded metal back 4' x 10' sheet	655.00

CERAMIC TILE

Description	Price
6" x 4" x 1/4" Tile	\$ 4.50
1/4" Hex Tile Mat 6" x 6"	9.40
6" x 4" x 1/4" Tile per sq. ft.	27.00

ABRASIVE RESISTANCE

Description	Price
AR 10ga 5' x 10' Sheet	\$ 306.00
AR 10ga per sq. ft.	6.25
AR 7ga 5' x 10' Sheet	406.00
AR 7ga per sq. ft.	8.75

ROUND SPOUT TRUSS KITS

ROUND SPOUT truss kits consist of bolt together-clamp around spiders, bolt on end clamps and sufficient $\frac{3}{8}$ " aircraft cable with turnbuckles, cable clamps, thimbles and hardware.

6" - 12" Truss Kits:

11ga end clamps, $\frac{3}{16}$ " x 1- $\frac{1}{2}$ " x 1- $\frac{1}{2}$ " spider angels and $\frac{3}{16}$ " x 1- $\frac{1}{4}$ " x 1- $\frac{1}{4}$ " angle brace angles.

	PAINTED	GALVANIZED
40' Truss Kit: 1-24" spider, 2 end clamps, 4 - $\frac{1}{2}$ " x 6" turnbuckles, 16 - $\frac{3}{8}$ " cable clamps, 140' - $\frac{3}{8}$ " galvanized aircraft cable (110)	\$463.00	\$556.00
60' Truss Kit: 2-24" spiders, 2 end clamps, 4 - $\frac{1}{2}$ " x 6" turnbuckles, 16 - $\frac{3}{8}$ " cable clamps, 200' - $\frac{3}{8}$ " galvanized aircraft cable (185)	\$694.00	\$781.00
80' Truss Kit: 2-24" spiders, 1-48" spider, 2 end clamps, 4 - $\frac{5}{8}$ " x 6" turnbuckles, 16 - $\frac{3}{8}$ " cable clamps, 280' - $\frac{3}{8}$ " galvanized aircraft cable (290)	\$981.00	\$1250.00
100' Truss Kit: 2-24" spiders, 2-48" spiders, 1-66" spider, 2 end clamps, 4 - $\frac{5}{8}$ " x 6" turnbuckles, 16 - $\frac{3}{8}$ " cable clamps, 400' - $\frac{3}{8}$ " galvanized aircraft cable (530)	\$1563.00	\$1813.00

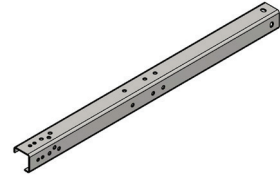
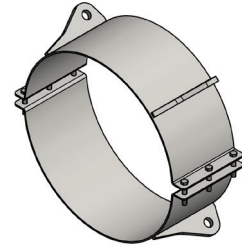
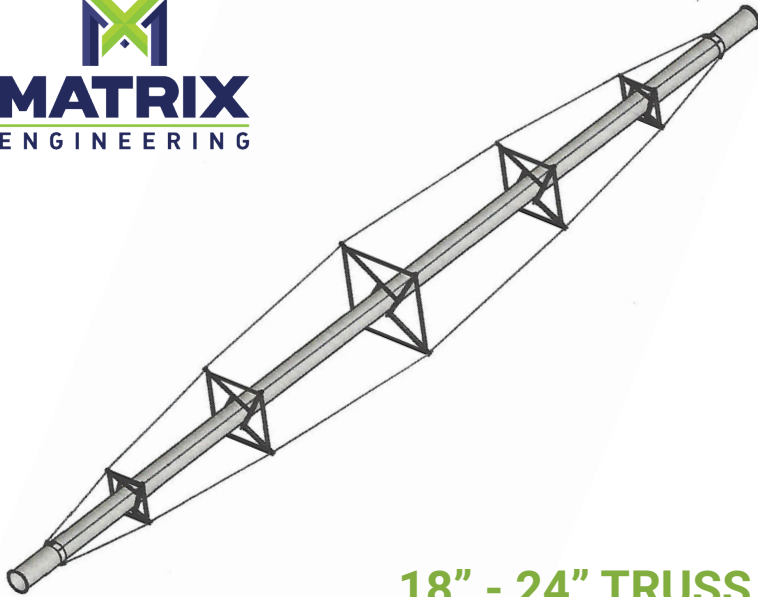
14" and 16" Truss Kits:

7ga end clamps, $\frac{1}{4}$ " x 3" x 3" spider angles and $\frac{1}{4}$ " x 2" x 2" angle brace angles. 40 ft., 60 ft., and 80 ft., truss kits use $\frac{3}{8}$ " aircraft cable and $\frac{3}{4}$ " turnbuckles.

40' Truss Kit: 1 - 36" spider, 2 end clamps, 4 - $\frac{3}{4}$ " x 9" turnbuckles, 16 - $\frac{3}{8}$ " cable clamps, 140' - $\frac{3}{8}$ " galvanized aircraft cable (310)	\$819.00	\$1000.00
60' Truss Kit: 2 - 36" spiders, 2 end clamps, 4 - $\frac{3}{4}$ " x 9" turnbuckles, 16 - $\frac{3}{8}$ " cable clamps, 200' - $\frac{3}{8}$ " galvanized aircraft cable (490)	\$1281.00	\$1594.00
80' Truss Kit: 2 - 36" spiders, 1 - 72" spider, 2 end clamps, 4 - $\frac{3}{4}$ " x 9" turnbuckles, 16 - $\frac{3}{8}$ " cable clamps, 320' - $\frac{3}{8}$ " galvanized aircraft cable (740)	\$1838.00	\$2188.00
100' Truss Kit: 2 - 36" spider, 2 - 72" spiders, 2 end clamps, 4 - 1- $\frac{1}{4}$ " x 12" turnbuckles, 420' - $\frac{5}{8}$ " galvanized aircraft cable (1040)	\$3163.00	\$3606.00

TRUSS KIT COMPONENT PRICING:

6", 8", 10", 12"	Price	Galvanized	14", 16"	Price	Galvanized
24" spider	\$ 169.00 (38)	\$ 200.00	36" spider	\$ 413.00 (172)	\$ 456.00
48" spider	219.00 (60)	256.00	72" spider	469.00 (260)	525.00
66" spider.....	263.00 (82)	300.00	end clamp	106.00 (40)	144.00
end clamp	69.00 (11)	88.00	$\frac{1}{2}$ " cable	1.50/ft.	
$\frac{3}{8}$ " cable80		$\frac{3}{4}$ " turnbuckles	14.40	
$\frac{1}{2}$ " turnbuckles	10.25		1 - $\frac{1}{4}$ " turnbuckles	91.90	
$\frac{5}{8}$ " turnbuckles.....	12.90				



18" - 24" TRUSS KITS:

Formed 7ga spider arms, formed 10ga spider braces, 7ga end clamps with 5/8" welded ear, 1/2" cable, heavy duty drop forged clips, 3/4" x 9" & 1-1/4" x 12" turnbuckles.

ALL TRUSS KIT COMPONENTS ARE GALVANIZED* *ALL TURNBUCKLES ARE CLEVIS/EYE STYLE
ALL ASSEMBLIES COMPLETE WITH HARDWARE

40' Truss Kit:

1 - 49" spider assembly, 2 - end clamp assemblies, 24 - 1/2" drop forged clips, 8 - 1/2" thimbles, 4 - 3/4" x 9" turnbuckles, 150' - 1/2" wire rope

PRICE

\$1100.00

60' Truss Kit:

2 - 49" spider assemblies, 2 - end clamp assemblies, 24 - 1/2" drop forged clips, 8 - 1/2" thimbles, 4 - 3/4" x 9" turnbuckles, 230' - 1/2" wire rope

\$1550.00

80' Truss Kit:

2 - 49" spider assemblies, 1 - 72" spider assembly, 2 - end clamp assemblies, 24 - 1/2" drop forged clips, 8 - 1/2" thimbles, 4 - 1-1/4" x 12" turnbuckles, 310' - 1/2" wire rope

\$2400.00

100' Truss Kit:

2 - 49" spider assemblies, 2 - 72" spider assemblies, 1 - 90" spider assembly, 2 - end clamp assemblies, 24 - 1/2" drop forged clips, 8 - 1/2" thimbles, 4 - 1-1/4" x 12" turnbuckles, 390' - 1/2" wire rope

\$3475.00

PRICE

49" spider assembly	\$ 338.00
72" spider assembly	438.00
90" spider assembly	538.00
End Clamp assembly (2-halves)	194.00

TRUSS KITS FOR SQUARE SPOUTING

These kits are designed to support several sizes of square spouting. Truss components are designed to work with square spouting with flanged ends. Maximum design length for square spouts is 60 ft.

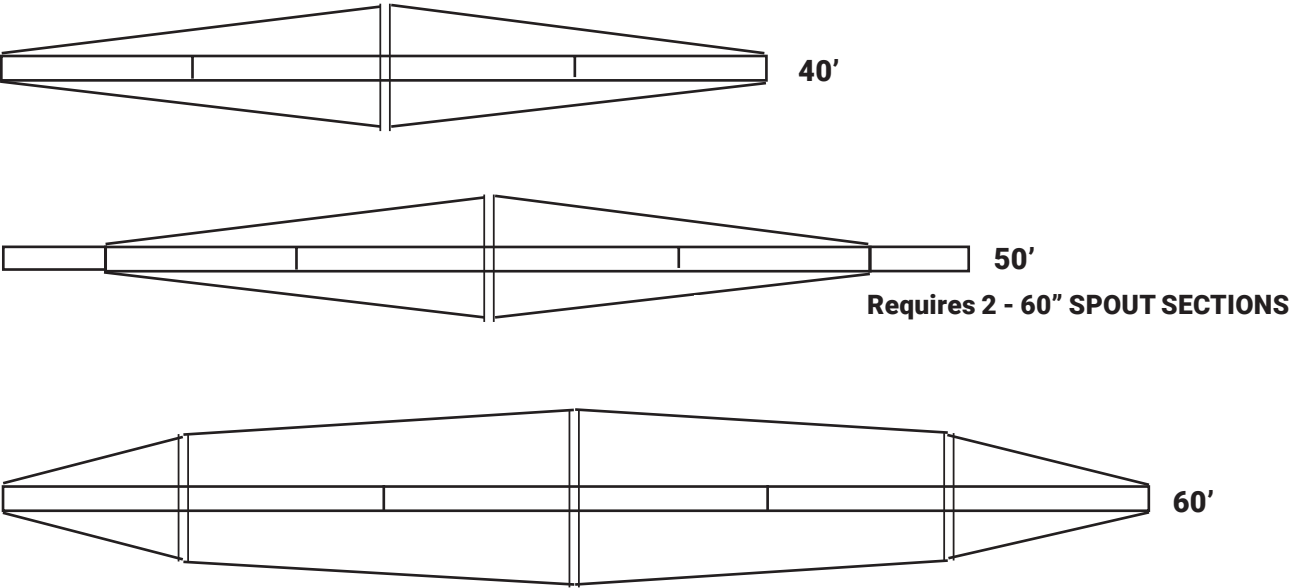
COMPONENTS OF TRUSS KIT INCLUDE:

- End flange connectors
- One or more intermediate welded trusses
- Truss cable
- Turnbuckles
- Assembly hardware

End flange connectors bolt at ends or spout or at first bolted connection from each end. Intermediate welded trusses bolt between square spout sections.

Maximum spout size is 18".

Component arrangement for 40', 50' and 60' spouts.



TRUSS KIT PRICING:

40 ft. Truss Kit: 2 end flange connectors, 1 intermediate welded truss, 3/8" cable, turnbuckles, hardware (530)	\$2250.00
50 ft. Truss Kit: 2 end flange connectors, 1 intermediate welded truss, 3/8" cable, turnbuckles, hardware (600)	\$2844.00
60 ft. Truss Kit: 2 end flange connectors, 3 intermediate welded truss, 3/8" cable, turnbuckles, hardware (1,300)	\$4800.00

FOR OTHER SIZES AND RUN LENGTHS CALL FOR PRICING

GRAIN PUMP TRUSS KITS

DESIGNED FOR 6", 8", 10" & 12" SYSTEMS



BASIC UNITS CONSISTS OF:

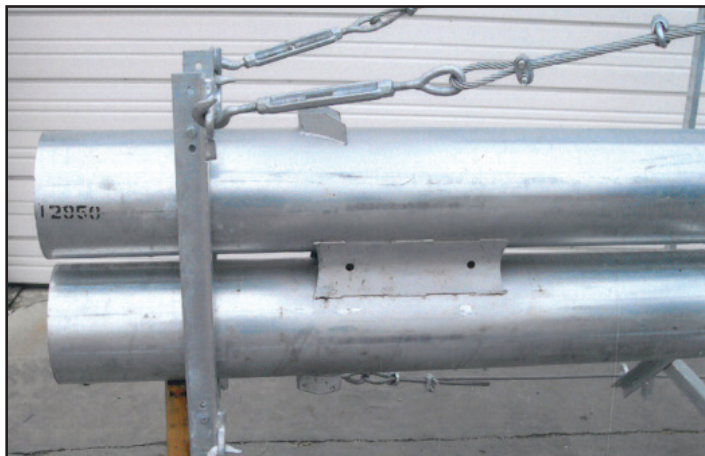
End Clamp Assembly:	\$ 94.00
24" Spider Assembly with Hardware:	\$ 306.00
48" Spider Assembly with Hardware:	\$ 331.00
66" Spider Assembly with Hardware:	\$ 356.00
40 ft System: (1) 48" spider, (2) end clamp assemblies, 140 ft. of $\frac{3}{8}$ " aircraft cable, $\frac{1}{2}$ " x 6" turnbuckles, hardware & cable accessories.	\$ 650.00
60 ft System: (2) 48" spider, (2) end clamp assemblies, 220 ft. of $\frac{3}{8}$ " aircraft cable, $\frac{1}{2}$ " x 6" turnbuckles, hardware & cable accessories.	\$ 963.00
80 ft System: (2) 48" spider, (1) 24" spider, (2) end clamp assemblies, 300 ft. of $\frac{3}{8}$ " aircraft cable, $\frac{1}{2}$ " x 6" turnbuckles, hardware & cable accessories	\$ 1344.00

ALL COMPONENTS ARE
GALVANIZED
(SEE REVERSE SIDE FOR DETAILS)

GRAIN PUMP TRUSS KITS SPECIFICATIONS

BASIC SPECIFICATIONS FOR COMPONENTS

End clamps are fabricated from 2" x 2" x 1/4" formed angle iron with 1/4" x 2" spacers. 1/2" I-Bolts are used to attach turnbuckles.



Spider arms are made with 7ga formed to 1 1/2" x 1 1/2" angle. Spider arm braces are 1 1/4" x 3/16" angle iron.



All components bolt together for speedy field installation. Once spiders and end clamps are assembled to spouting, it is recommended to weld all contact points on spouting.



45° FLATBACK DISTRIBUTORS

Basic distributor includes flanged outlets, 45° inner spout with $\frac{3}{16}$ " wall, 10ga discharge stubs.

F.O.B. FACTORY APPROX. FREIGHT ADD 20%

SIZE	4-HOLE	6-HOLE	8-HOLE	10-HOLE	12-HOLE
6"	\$ 1,730	\$ 1,864	\$ 2,198	\$ 2,838	\$ 3,261
8"	\$ 1,874	\$ 1,954	\$ 2,376	\$ 2,950	\$ 3,588
10"	\$ 2,103	\$ 2,279	\$ 2,813	\$ 3,363	\$ 3,971
12"	\$ 3,014	\$ 3,254	\$ 3,906	\$ 5,106	\$ 5,805
14"	\$ 3,350	\$ 3,3951	\$ 4,635	\$ 5,663	\$ 6,489
16"	\$ 3,993	\$ 4,604	\$ 5,285	\$ 6,148	\$ 6,815

DISTRIBUTORS INCLUDE BASIC PIPE OR CABLE CONTROLS.

CABLE OR PIPE NOT INCLUDED

FOR LARGER SIZES OR MORE OUTLETS, CALL FOR PRICING

Galvanized Hot Dipped Outer Shell	Call for pricing
Stainless Steel Internal Spout	Call for pricing
60° Spout	Call for pricing
Cable Control Indicator Kit	Call for pricing
Full Round Distributors	Call for pricing
Urethane or AR Lined Spout and Discharge Stubs	Call for pricing
Electric Distributors	Call for pricing
Stainless Steel Distributor	Call for pricing
Cable Guides	Call for pricing

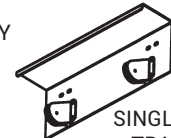
DISTRIBUTOR CABLE CONTROL COMPONENTS:

The cable control can control the location of the spout from the ground. The top cable wheel attaches to the pipe that supports the turn spout. The transfer pulley brackets allows for the cable that is wrapped around the cable wheel that has the various spout numbers on the wheel. The intermediate spout latch cable pulley allows for the latch control cable to be directed to the bottom where is it attached to the tool pedal. Intermediate cable guides are used to prevent cable sway due to wind. The number wheel is located at work level and numbers can be placed on the mounting bracket to designate the location of the spout. Included with the control are turnbuckles to tension the cables and cable clamps. $\frac{1}{8}$ " aircraft cable is normally included with the control. Cable length is normally 3 times the height if the elevator. If the size of the leg casing is supplied leg clamps can be supplied to attach the transfer pulley and the number wheel to the leg casing.

UPPER WHEEL
\$137.50



TRANSFER PULLEY
\$90.00



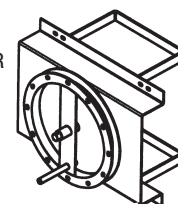
SINGLE CABLE
TRANSFER
\$69.00



CABLE GUIDE
\$75.00



BOTTOM INDICATOR
WHEEL ASSEMBLY
\$269.00



FOOT PEDAL
\$45.00



8x5 5.54

12x7 (2.5)

10x6 5.81

16x7 (3.2)

16x8 (3.9)

ELEVATOR CUPS - PLASTIC CC-HD POLYETHYLENE

Low profile - Call for pricing

Size	Wt.	Price	Size	Wt.	Price
6x4.....	(.4)	\$ 3.98	11x6.....	(1.8)	\$ 7.44
7x5.....	(.6)	5.33	12x6.....	(2.0)	8.06
8x5.....	(.8)	5.54	12x7.....	(2.5)	9.83
9x5.....	(1.0)	5.75	12x8.....	(3.0)	11.95
9x6.....	(1.5)	6.79	14x7.....	(2.0)	10.79
10x6.....	(1.7)	7.26	16x7.....	(3.2)	12.58
			16x8.....	(3.9)	15.79

Low profile - Call for pricing

Prices reflect an order of a minimum of 100 pcs. For less than 100 add 5%. Call for other sizes and brands.**ELEVATOR CUPS - STEEL****CALL FOR PRICING**All cups are F.O.B. supplier if not in stock. When ordering, please give the following information:
width of cup, projection of cup, bolt hole spacing on cup and name of cup (if possible).**ELEVATOR CUP BOLTS**

Priced per 100 packaged, cup bolts less nuts.

Size	Wt.	Price	Size	Wt.	Price
1/4" x 3/4"	(2.1)	\$ 16.75	5/16" x 1"	(6.0)	\$ 21.35
1/4" x 1"	(3.4)	*17.25	5/16" x 1 1/4"	(6.4)	21.85
1/4" x 1 1/4"	(3.8)	*17.80	5/16" x 1 1/2"	(7.6)	22.95
1/4" x 1 1/2"	(4.1)	18.50	5/16" x 1 3/4"	(8.8)	25.00
1/4" Hex Nut	(.8)	2.50	5/16" Hex Nut	(1.0)	3.60
1/4" Flat Washer	(.7)	3.75	5/16" Flat Washer	(1.3)	6.10
1/4" Lock Washer	(.4)	3.75	5/16" Lock Washer	(.6)	6.10

PVC ELEVATOR BELTING

Static conductive, flame retardant, oil resistant.

Width	Wgt/Ft	Description	Per Foot**	Width	Wgt/Ft	Description	Per Foot**
7"	(.8)	250#	4.51	8"	(1.2)	350#	6.31
9"	(1.1)	250#	5.80	10"	(1.5)	350#	7.89
10"	(1.2)	250#	6.45	11"	(1.7)	350#	8.69
11"	(1.3)	250#	7.09	12"	(1.8)	350#	9.48
12"	(1.4)	250#	7.74	13"	(2.0)	350#	10.26
14"	(1.6)	250#	9.03	14"	(2.1)	350#	11.05
				15"	(2.3)	350#	11.84
				17"	(3.0)	350#	13.41

Pricing shown without holes, ADD \$0.10 per hole for punched belt.**F.O.B. factory, consult an API representative for freight.****RUBBER COVERED - 1/16" x 1/16" COVERS****CALL FOR PRICING****ALUMINUM BAR BELT SPLICE**

\$ 12.50/inch

CONVEYOR BELTING FRICTION SURFACE BACK

CALL FOR PRICING

LACING FOR CONVEYOR BELT

Stainless steel RS125 per inch fastener with pin - \$ 5.63 per inch
For installation of splice add \$150.00

LAGGING FOR HEAD PULLEY

CALL FOR PRICING

UHMW DRAG CONVEYOR PARTS

1 1/2" diameter return rollers x 3" long..... Call for pricing

UHMW Flights Call for pricing

Chain Return Rollers

Each assembly includes shaft, roller, set collars

8", 10", 12" roller on 1/2" shaft..... Call for pricing

16" and 21" roller on 3/4" shaft..... Call for pricing

Call for pricing on made to order UHMW flights and drag chain with flight bars.

ELEVATOR BELTS DESIGN INFORMATION

We'll design the belt to best fit your elevator! Just supply us with the following information:

- Cup size and spacing
- Plastic or steel cup
- What is being elevated
- Height of elevator
- Head pulley diameter
- Head pulley speed (RPM)
- Horsepower
- Head drive information

Using a CEMA elevator belt design formula gives us information we need to create a proper belt strength.

BOOT PULLEYS

Description	Wt.	Price
8" x 8" Steel Boot Pulley with 1" Bore	(28)	\$ 353.00
16" x 11" Steel Boot Pulley with 1-7/16" Bore	(77)	515.00
24" x 11" Steel Boot Pulley with 1-7/16" Bore	(154)	1059.00
36" x 14" Steel Boot Pulley with 2-3/16" Bore	(365)	2096.00
42" x 16" Steel Boot Pulley with 2-7/16" Bore	(520)	2894.00
8" x 8" Steel Slatted Boot Pulley with 1" Bore	(31)	469.00
16" x 11" Steel Slatted Boot Pulley with 1-7/16" Bore	(77)	650.00
24" x 11" Steel Slatted Boot Pulley with 1-7/16" Bore	(151)	1381.00
36" x 14" Steel Slatted Boot Pulley with 2-3/16" Bore	(348)	2834.00
42" x 16" Steel Slatted Boot Pulley with 2-7/16" Bore	(554)	3783.00

Other sizes quoted on request

HEAD PULLEYS

Description	Wt.	Price
8" x 8" Steel Lagged Head Pulley with 1-7/16" QD	(29)	\$ 741.00*
16" x 11" Steel Lagged Head Pulley with 1-15/16" Bore QD	(106)	1356.00*
16" x 11" Steel Lagged Head Pulley with 2-3/16" Bore QD	(106)	1356.00*
24" x 11" Steel Lagged Head Pulley with 2-3/16" Bore QD	(183)	1681.00*
24" x 11" Steel Lagged Head Pulley with 2-7/16" Bore QD	(183)	1681.00*
36" x 14" Steel Lagged Head Pulley with 2-7/16" Bore QD	(427)	3443.00*
42" x 16" Steel Lagged Head Pulley with 3-7/16" 4 QD	(612)	4716.00*

*Holz Type Neoprene Lagging

BOOT SHAFTS

Description	Wt.	Price
1" x 15" Boot Shaft for 8" Pulley	(4)	Call for pricing
1-7/16" x 19" Boot Shaft for 16" & 24" Pulley	(9)	Call for pricing
2-3/16" x 24" Boot Shaft for 36" Pulley	(26)	Call for pricing

HEAD SHAFTS

Description	Wt.	Price
1-7/16" x 24" Head Shaft for 8" Pulley	(12)	Call for pricing
1-15/16" x 34" Head Shaft for 16" & 24" Pulley	(30)	Call for pricing
2-3/16" x 34" Head Shaft for 16" & 24" Pulley	(37)	Call for pricing
2-7/16" x 36" Head Shaft for 16" & 24" Pulley	(48)	Call for pricing
2-7/16" x 40" Head Shaft for 16" & 24" Pulley	(52)	Call for pricing

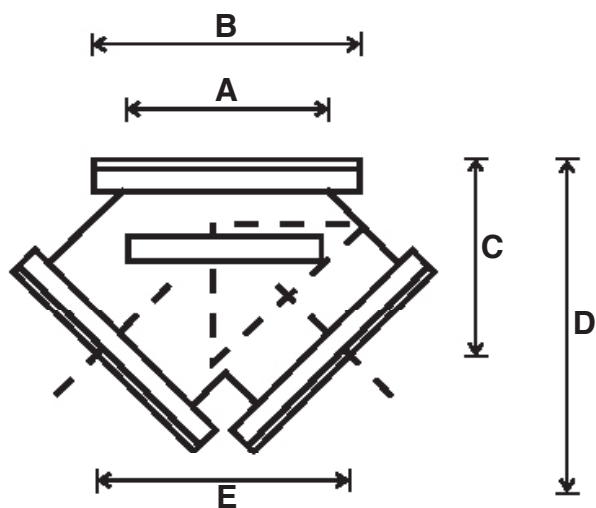
BOOT BEARINGS

Description	Wt.	Price	Description	Wt.	Price
1 7/16" Wide Slot	UCT 207-23	Call for pricing	1-7/16" 2 Bolt Flg. Bearings for 16" & 24" Pulley ..	UCFL207-23(3) ..	Call for pricing
1 15/16" Wide Slot	UCT 210-31	Call for pricing	1-7/16" Pillow Bloc Bearings for 16" & 24" Pulley ..	UCFL209-23(5) ..	Call for pricing
2 3/16" Wide Slot	UCT 211-35	Call for pricing	2-3/16" 4 Bolt Flg. Bearings for 36" Pulley	UCFL211-35(8) ..	Call for pricing
1" 2 Bolt Flg. Bearings for 8" Pulley ...	UCFL205-16(2) ..	Call for pricing	2-3/16" Pillow Bloc Bearings for 36" Pulley	UCFL205-16(2) ..	Call for pricing

HEAD BEARINGS

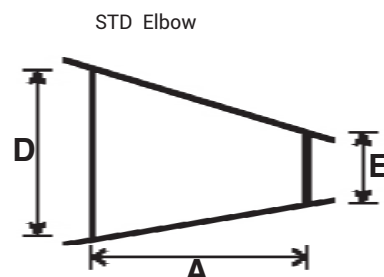
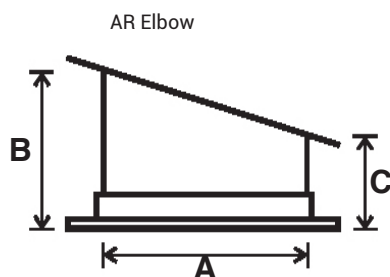
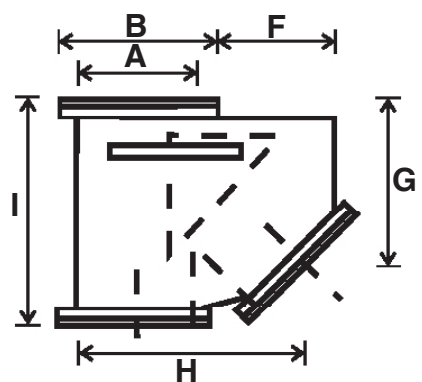
Description	Wt.	Price
1 7/16" Pillow Blocs Bearings for 8" Pulley UCP 207-23 (5)		Call for pricing
1 7/16" Flg. Bearings for 8" Pulley UCF 207-23..... (4)		Call for pricing
1-15/16" Flg. Bearings for 16" & 24" Pulley UCF 210-31 (6)		Call for pricing
1-15/16" Pillow Bloc Bearings for 16" & 24" Pulley UCP 210-31 (7)		Call for pricing
2-3/16" Pillow Bloc Bearings for 16" & 24" Pulley UCP 211-35 (9)		Call for pricing
2-7/16" Pillow Bloc Bearings for 24" Pulley-300 Series SCM..... UCPX 12-39 (17)		Call for pricing
2-7/16" 4 Bolt Flange Bearings-300 Series SCM UCFX 12-39 (17)		Call for pricing

VALVE, TRANSITIONS & ELBOW DIMENSIONS



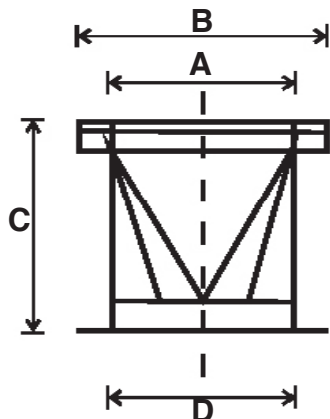
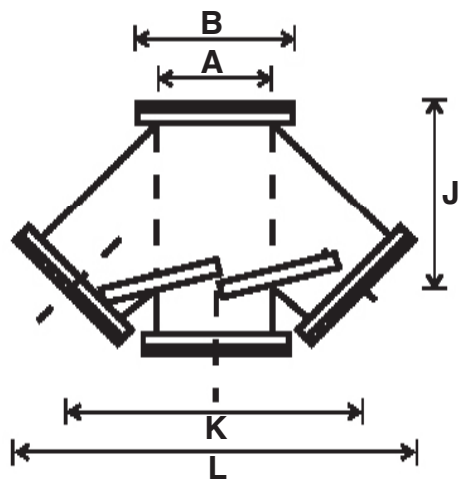
VALVE DIMENSIONS

	8"	10"	12"	14"	16"
A	8	10	12	14	16
B	10 1/2	12 1/2	15	17	19
C	8	9 1/4	10 3/4	12	15
D	11 3/4	13 1/2	16	18 3/4	21
E	10 1/4	12	13 3/8	15	20
F	7	8 1/2	10 1/2	12	14 1/2
G	10 3/8	11	16	19 1/4	20
H	13 5/8	17 1/4	20 7/8	24 7/8	29
I	16 5/8	18 3/4	23	27	30
J	12	13 1/2	16 1/4	18	20
K	20 7/8	26 5/8	29 5/8	33	42
L	27 7/8	34 3/4	40 1/4	44	50



ELBOW DIMENSIONS

	6"	8"	10"	12"	14"
A	6	8	10	12	14
B	5 1/2	6 1/8	7	8 1/8	9 7/8
C	3	2 13/16	2 7/8	3 3/16	4 1/8
D	7 1/2	6	7	8	9
E	2 3/4	2 7/8	3 1/16	3 5/16	3 9/16



TRANSITION DIMENSIONS (SQUARE TO ROUND)

	6"	8"	10"	12"	14"	16"
A	6	8	10	12	14	16
B	8 1/2	10 1/2	12 1/2	15	17	19
C	8	8	10	10	10	10
D	6	8	10	12	14	16

SPOUTING CAPACITY CHART ROUND AND SQUARE

ROUND DIAMETER SPOUTS

Spout Diameter	Sq. inches	Bushels Per Hour*
6"	28	1837
8"	50	3267
10"	78	5105
12"	113	7351
14"	154	10003
16"	200	13071
18"	254	16542
20"	314	20423

SQUARE SPOUTS

Spout Diameter	Sq. inches	Bushels Per Hour*
6"	36	2340
8"	64	4160
10"	100	6500
12"	144	9360
14"	196	12740
16"	256	16640
18"	324	21060
20"	400	26000

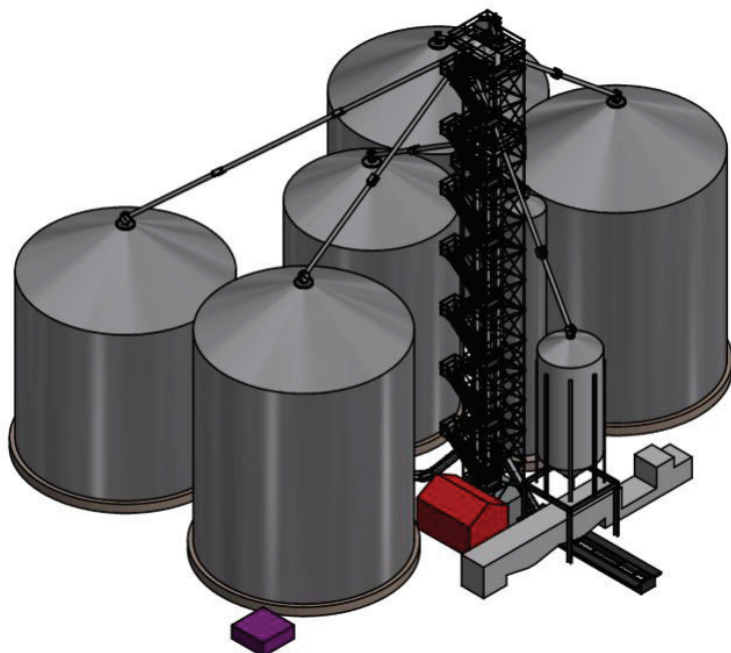
* Assumes whole, clean, dry grain, 45 spout slope. Consult chart below for other commodities.

Commodity	Spout Angle*	Slope Equivalent
Small Wet Grain	45	1:1
Pellets	45	1:1
Rolled Grain	45	1:1
Mixed Feeds	45 ⁽¹⁾	1:1
Eal	60	1.75:1
Fertilizer Dry Bulk	45	1:1
Mixed Feeds	60 ⁽²⁾	1.75:1

(1) Mixed Feeds that do not contain any other ingredients such as molasses, oil, scraps, etc.

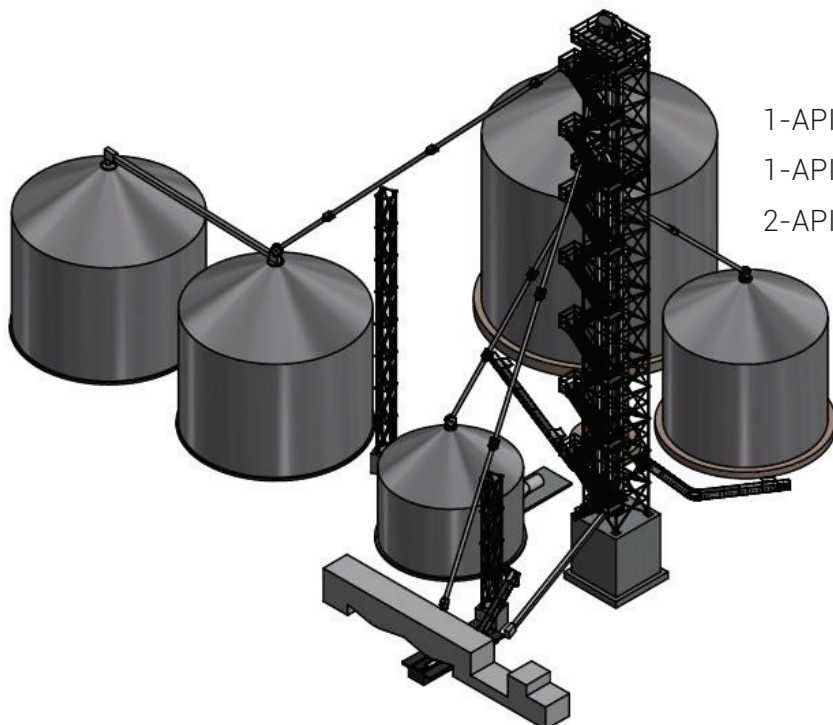
(2) For mixed feeds that contain ingredients that cause sluggish flow.

Agri-Products 3D Bin Layouts



Luethje Farm

- 1-API M42 Elevator x 145 ft, 10,000 bu/hr
- 1-API M43 Elevator x 115 ft, 10,000 bu/hr
- 1-API 1624 Incline Un-Load Drag, 9,500 bu/hr
- 2-API 1624 Incline Reclaim Drags, 7,000 bu/hr
- 1-Remote Control Overhead Hopper Gate



Goertzen Farm

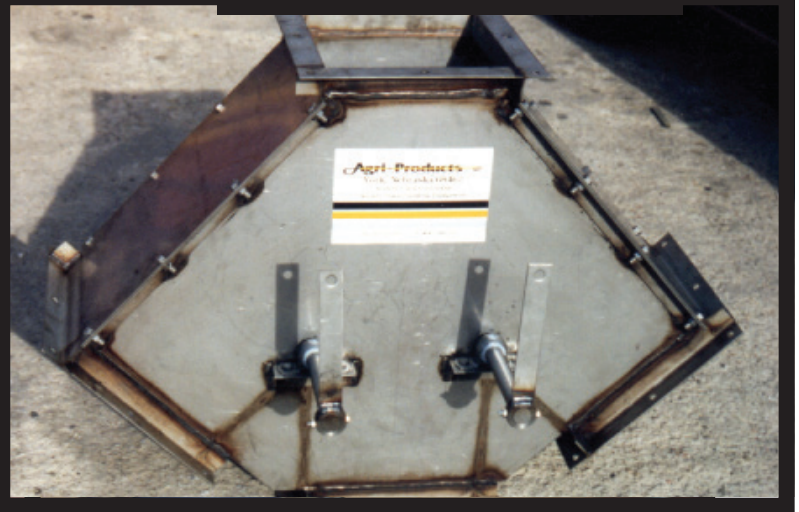
- 1-API M36 Elevator x 145 ft, 7,000 bu/hr
- 1-API M36 Elevator x 115 ft, 7,000 bu/hr
- 2-API 1624 Incline Reclaim Drags, 6,000 bu/hr

RECENT ORDERS DESIGNED



Motorized "K" valve

Stainless steel
three-way valve



Ceramic lined spouts and hoppers



Heavy duty diversion valve
with air actuated gate

RECENT ORDERS DESIGNED



M42 galvanized leg sections

Custom two-way
electrical pan valve



M42 head bottom with
pulley and shaft



Working display elevator. 120 bu/hr

NOTES

NOTES



800-288-1117

www.agriproductsinc.com

agriproducts@agriproductsinc.com

**Going the extra country mile means leading the way
for innovation and setting the industry standard.**