

2



1

Cross Mount

John Deere with P.S. Transmission

8100,8200,8300,8400

8110,8210,8310,8410

8120,8220,8320,8420,8520

8130,8230,8330,8430,8530

8225R,8245R,8270R8295R,8320R,8345R

8235R,8260R,8285R8310R,8335R,8360R

250 ID: JD-8RPS-95CU-CM-250C

PARTS LIST

ITEM	QTY	PART NUMBER	DESCRIPTION
1	1	10-1402R	JD8000 HC Side Plate R
2	1	10-1200	JD8000 Undertruss
3	1	10-1402L	JD8000 HC Side Plate L
4	2	10-1022	7x7x6' tube
5	4	10-1015	250 Cross Mount Saddle
6	4	10-1016	7 ga. Channel
7	4	60-1033	4 x 6 Angle

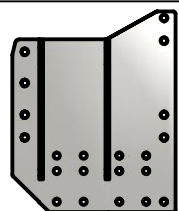
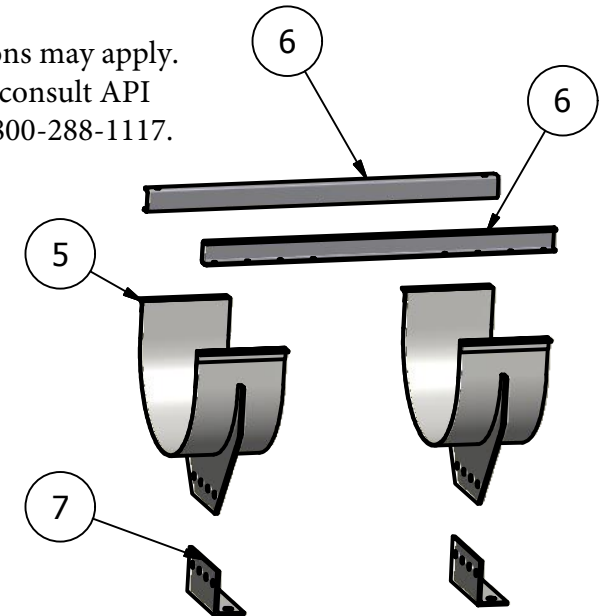
Price List

250 gal w/Tanks \$6828.00

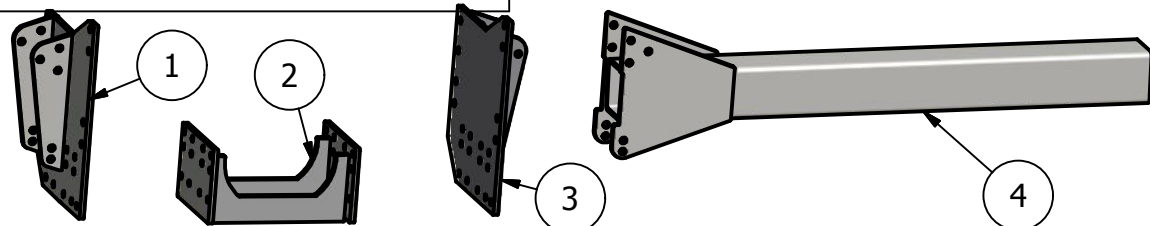
Limitations may apply.
Please consult API
Sales at 800-288-1117.

Bolt List

QTY	Description	Placement
24	3/4 x 2 1/2 Bolts	Undertruss to Tractor side Plates
20	3/4 x 2 1/2 Bolts	Tubes to Tractor Plates
16	3/4 x 2 1/2 Bolts	Angle to Saddle
4	1 in x 7 x 9 Ubolts	Angle to Tube
16	20mm x 60mm x 10.9 Bolts	Side Plate to Tractor
8	1 in Lock washers	
8	1 in Nuts	
60	3/4 Lockwashers	
60	3/4 Nuts	
16	20mm Hardened Flatwashers	
16	3/8 x 1 Bolts	Channel to Saddle
16	3/8 in Flange Lock Nuts	
2	3M Non-Skid Pads	on Tubes
4	Nylon Strap Assembly	



Front



2



1

B

B

A

A